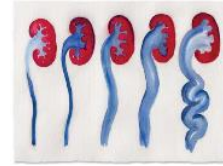




ESPU Masterclass 2025: High grade Infant VesicoUreteral Reflux



Scientific program

May 16th

Registration

12.45-13.00	Opening, welcome
13.00-13.15	Aetiology, epidemiology and pathophysiology of VesicoUreteral Reflux
13.15-13.35	Diagnostic work-up - Radiology (VCUG, US, MRI) Indication, interpretation and pit-falls
13.40-13.55	Diagnostic work-up - Nuclear medicine (dynamic and static renal scintigram) When and how: indication, interpretation and pit-falls
14-15	Coffe break and time to visit our sponsors. Optional tour of the new Childrens Hospital
15.00-15.10	Diagnostic work-up - bladder evaluation in infants and young children
15.10-15.20	Treatment of bbd in infants and young children
15.25-15.45	A nephrologists point of view: Infant UTI and renal damage. Top-down or bottom up primary work-up. CAP vs surveillance
15.55-16.40	Multidisciplinary round and case presentations (urologist, nephrologist, radiologist, nuclear medicine)
16.45-17.00	Sponsor Session
18.30/ 19.00	Social event including Dinner (optional)

May 17th, 2025

9.00-9.05	Good Morning. Highlights from yesterday
9.05-9.15	The revised EAU Guidelines
9.15-9.30	EAU Guidelines vs ESPN (nephrologists) Guidelines. Follow-up and duration of treatment (when, how, for whom, when to stop prophylaxis)
9.35-10.00	Surgical management – endoscopic injection; when and how and to whom (technique, risks, pit-falls) When NOT to go ahead with injection therapy - Cave Cases
10.05-10.15	Surgical management – other temporary and permanent procedures; when and how
10.20-10.35	Parents perspective and Qualitative research
10.35-11.00	Coffee break
11.00-11.15	Long term follow-up, potential risks and complications
11.20-12.00	Participant cases multidisciplinary round
12.00-12.30	Q&A – ask the experts. Closing remarks and take-home message



Sahlgrenska
Academy



REGION
VÄSTRA GÖTALAND
SAHLGRENKA UNIVERSITY HOSPITAL